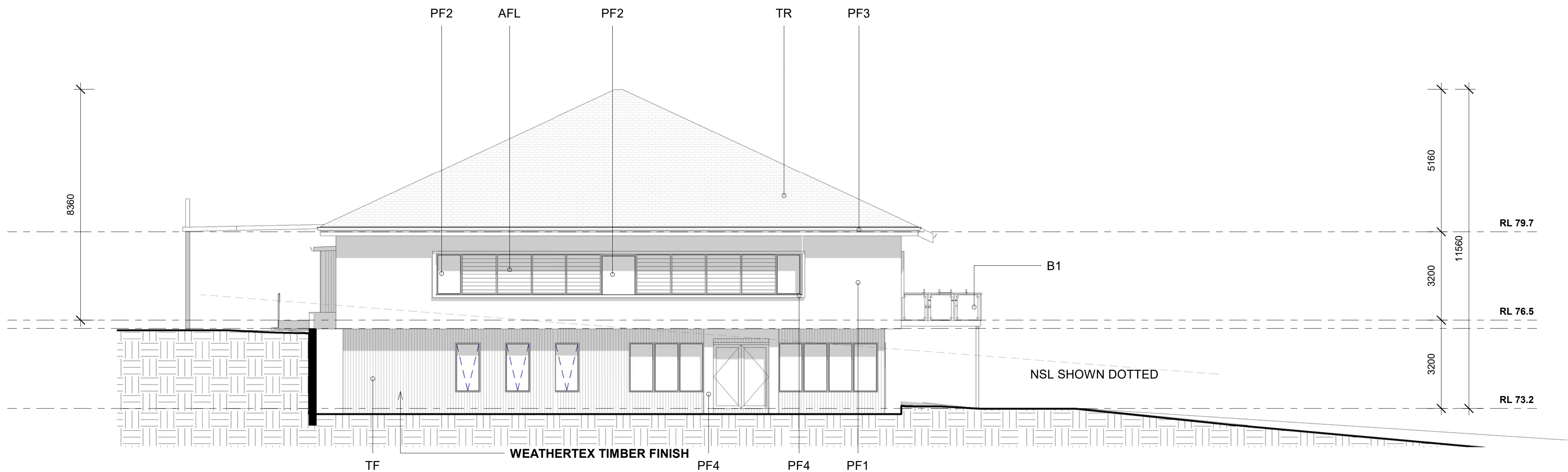


1 NORTH ELEVATION  
1 : 100



2 EAST ELEVATION  
1 : 100

## FINISHES

**AF** - ALUMINIUM FRAMED SLIDING WINDOWS - WOODLAND GREY  
**AFA** - ALUMINIUM FRAMED AWINING WINDOWS - WOODLAND GREY  
**AFL** - ALUMINIUM FRAMED LOUVRES - WOODLAND GREY  
**AFSD** - ALUMINIUM FRAMED SLIDING DOORS - WOODLAND GREY

**TR** - CONCRETE TILED ROOF - BORAL LINEA CHARCOAL GREY OXIDE  
**CL** - KLIPLOCK 700 HS WALL - WOODLAND GREY  
**TF** - NATURAL TIMBER FINISH - WEATHERTEX

**PF1** - PAINT FINISH BROADWALL, DP'S AND AC SHEETING - LIGHT GREY  
**PF2** - PAINT FINISH AC SHEETING AND PORCHE COCHRE SUPPORT POLE - ORANGE  
**PF3** - PAINT FINISH FASCIA BOARD AND GUTTER - CHARCOAL GREY  
**PF 4** - PAINT FINISH TO SURROUND - WHITE

**B1** - POST AND RAIL/GLASS PANEL BALUSTRADE - LIGHT GREY

## CONSTRUCTION NOTES

GROUND & LOWER GROUND FLOORS TO BE CONCRETE WITH "AFS" WALLS OR SIMILAR TO GROUND FLOOR ONLY. UPPER FLOOR TO BE STEEL FRAME CONSTRUCTION WITH HEBEL EXTERNAL PANELS WITH GYPROCK LINED HEBEL INTERNAL WALLS. STEELFRAMED ROOF TO WITH BORAL "LINEA" OXIDE THRU CONCRETE TILE AND GYPROCK LINED CEILING. REFER TO ENGINEERS DETAIL FOR STRUCTURAL AND ENERGY & SUSTAINABILITY PERFORMANCE CRITERIA.

## CONSTRUCTION NOTES - POOL

POOL TO BE STANDARD CONCRETE CONSTRUCTION TO ENG DETAILS WITH PERIMETER STRUCTURE OVER 100 SQ. COLUMNS TO HOUSE ADJUSTABLE PERGOLA

. PULL DOWN ZIP UP SIDES WILL FACILITATE ALL WEATHER CONDITIONS.

A	09.05.2017	DEVELOPMENT APPLICATION SET
NO.	DATE:	DETAILS:

Amendments:

**Stephen Jones Associates**

**p. 02 9977 2240**  
**m. 0418 866 784**  
**e. sj@stephenjonesassociates.com**  
**w. www.stephenjonesassociates.com**

Registered Architect Gary Finn No. 5774 (NSW)

Project:  
**SENIORS LIVING DEVELOPMENT**  
**LOT 1, DP 780801**  
**WINDWARD WAY, MILTON NSW 2538**

Drawing:  
**CLUBHOUSE ELEVATIONS 2**

Scale: 1:100 @A1 Job No: 1516 Drawing No:  
Date: 09.05.2017  
Drawn: SJ  
**DA15**  
This drawing is copyright and must not be retained, copied or used without consent of designer.